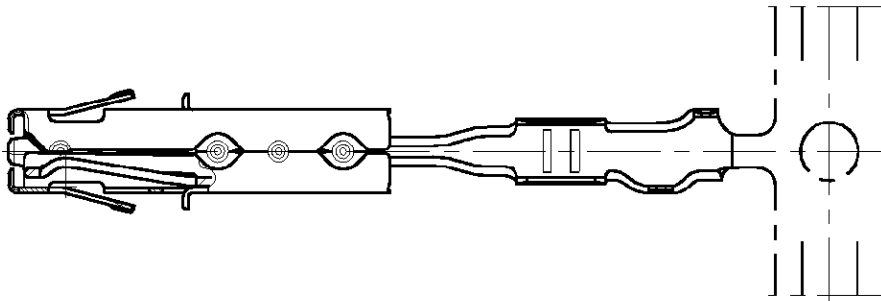
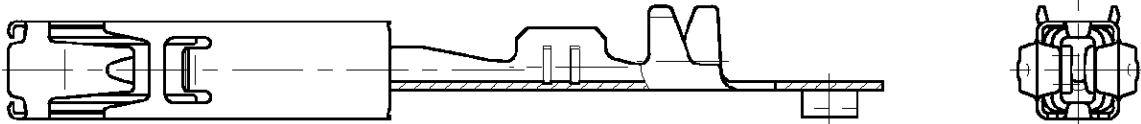




THE DATASHEET OF
1241372-1



MATED WITH: PASSEND ZU:	LOC	DIST	REVISIONS AENDERUNGEN DESCRIPTION BESCHREIBUNG				DATE	DWN	APVD
-	AI	-	P	LTR					
PROJEKT NR.: A98-52238				A	NEW DRAWING	09.06.99	-	BE	
				A1	TITLE COMPLETED	27.06.01	-	BE	
				A2	SPRING MODIFY	27.02.02	-	RL	



REFER TO PRODUCT GROUP DRAWING 1241436
FOR LATEST INFORMATION ON THE PART

Auf die Produkt-Gruppenzeichnung 1241436



für die aktuelle Information zum Teil wird hingewiesen

RELEASED FOR PUBLICATION
 FREI FUER VEROEFFENTLICHUNG
 ALL RIGHTS RESERVED
 ALLE RECHTE VORBEHALTEN.
 BY TYCO
 COPYRIGHT 2001
 THIS DRAWING IS UNPUBLISHED
 VERTRAULICHE UNVEROEFFENTLICHTE ZEICHNUNG



-	-	-	-	-	-	-	-
CUSTOMER PART NO	AMP PART NO	REV.	PCS.	MATERIAL	SURFACE COLOR	DESCRIPTION	
DIMENSIONS: DIMENSIONEN: mm	DWN B. Egenolf 09-JUN-1999	MATERIAL		FINISH OBERFLAECHE/FARBE		-	
TOLERANCES UNLESS OTHERWISE SPECIFIED: ALLGEMEINTOLERANZEN	CHK B. Egenolf 27-JUN-2001	AMP Tyco Electronics AMP GmbH D - 64625 Bensheim					
1. ISO 8015 2. ISO 2768 - mH -E 3. DIN 16901 - 140	APVD -						
0 PLC ± 1 PLC ±- 2 PLC ±- 3 PLC ±-	PRODUCT SPEC PRODUKTSPEZ.	NAME AMP MCP1.5K FLATTYPE RECEPTACLE AMP MCP1.5K Flachkontakt					
ANGLES / WINKEL ±-	APPLICATION SPEC VERARBEITUNGSSPEZ.	SIZE	CAGE CODE	DRAWING NO ZEICHNUNGS-NR.	RESTRICTED TO NUR FUER		
	WEIGHT GEWICHT	A4 00779		G-1241372		-	
CUSTOMER DRAWING / KUNDENZEICHNUNG				MASSSTAB	BLATT	OF	
				5:1	1	VON 1	A2

Looking for pricing, stock, or lifecycle information?

Click below to explore more details on WIN SOURCE:

-  [View 1241372-1 on WIN SOURCE](#)
-  [TE Connectivity Information](#)

Optimize Your Supply Chain with WIN SOURCE Solutions

-  Global Sourcing Solution
-  Obsolete Management
-  Cost Control Management
-  Shortage Management
-  Alternative Solution
-  Excess Inventory Management